

Support Note

26 February 2018

USB SWITCHER APP

The USB Switcher app enables Data Transfer without Windows Mobile Device Center

Trimble® has released the USB Switcher app in an effort to overcome some of the issues with Windows Mobile® Device Center running on PCs powered by the Windows® 10 operating system.

The USB Switcher app changes how a Trimble Windows Embedded Handheld device connects to a PC powered by the Windows operating system. Instead of using Windows Mobile Device Center to access the internal storage on the device, with the app you can instead access the SD card directly in a device and have that appear as a lettered drive in Windows on a PC.

You can then set up Data Transfer to send and receive data from the Trimble TerraSync™ software to the Trimble GPS Pathfinder® Office or Trimble Positions™ software from this lettered drive.

When to use the USB Switcher app?

The USB Switcher app works best for Trimble Mapping & GIS handheld users who already have the TerraSync software installed and set up on their device and only need to get data to and from the device.

The solution does not work for users who need to install and license the TerraSync software on their device. If you are not having any issues with Windows Mobile Device Center, then you do not need to use the USB Switcher.

Which Trimble devices are supported?

This app only works on Trimble GeoExplorer® 6000 and Geo 7X handhelds, and Trimble Juno® 3 devices.

It does not work on Trimble Juno 5 / T41 handhelds, Trimble Nomad® handhelds, and TSC3 controllers as they do not have the USB Mass Storage driver installed. It also does not work on devices powered by the Windows Embedded Handheld 6.1 operating system, such as the Trimble GeoExplorer 2008 and 3000 series, as they also do not support Mass Storage.

USB Switcher App

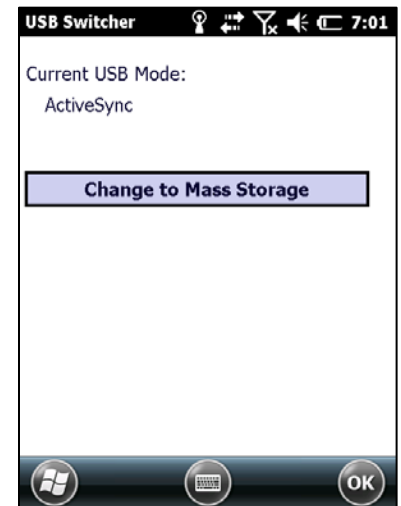
The USB Switcher app runs on a Windows Embedded Handheld device and allows you to switch your device between using Windows Mobile Device Center (USB Mode: ActiveSync), and using USB Mass Storage. The USB Mass Storage option exposes the SD card in the device as a lettered drive in Windows. It DOES NOT expose the internal storage of the device; writing to the internal storage can only be done via the Windows Embedded Handheld operating system which requires the use of Windows Mobile Device Center. If there is no SD card in the device then nothing will appear in Windows.

www.trimble.com

© 2018, Trimble Inc. All rights reserved. Trimble, the Globe & Triangle logo, GeoExplorer, GPS Pathfinder, Juno, Nomad are trademarks of Trimble Inc. registered in the United States and in other countries. Positions and TerraSync are trademarks of Trimble Inc. Windows and Windows Mobile are either registered trademarks or trademarks of Microsoft Corporation in the United States and/or other countries. All other trademarks are the property of their respective owners.

Install instructions

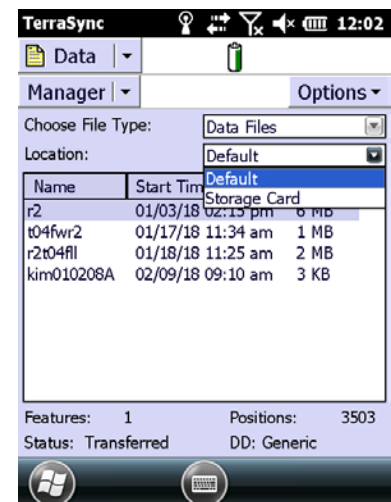
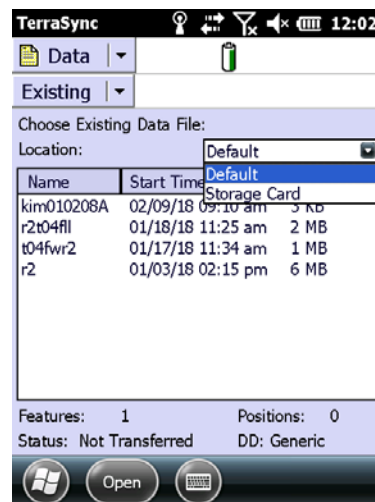
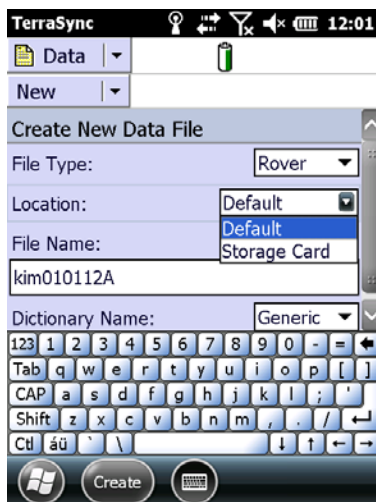
1. Download the USB Switcher.zip file from <http://trl.trimble.com/dscgi/ds.py/Get/File-871020/UsbSwitcher.zip>.
2. Extract the 3 files to a folder on your PC.
3. Copy-paste the 3 files to a Windows Embedded Handheld device compatible with the USB Switcher app. Copy-paste to an SD card if necessary, and insert the SD card into the Windows Embedded Handheld device.
4. Run the app to show the current USB mode, and change to Mass Storage if required.



Configuring TerraSync to read and write to the SD card

You must configure the TerraSync software to read and write data to the SD card rather than internal storage.

When creating new data files or editing existing files, change the data file **Location** to **Storage Card** in any of **Data / New**, **Data / Existing**, or **Data / Manager**:



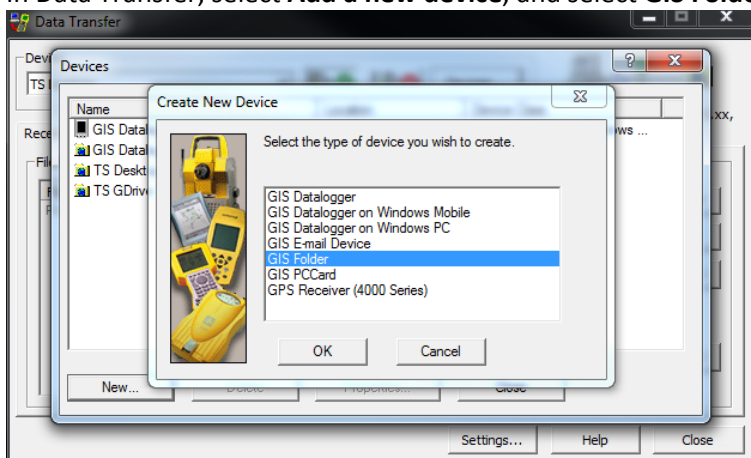
If you forget to change the file location to **Storage Card** or you want to continue using the internal storage, copy the files to the SD Card using **File Manager / Options / Copy To**.

Background files for the map also has an option to load files from SD card.

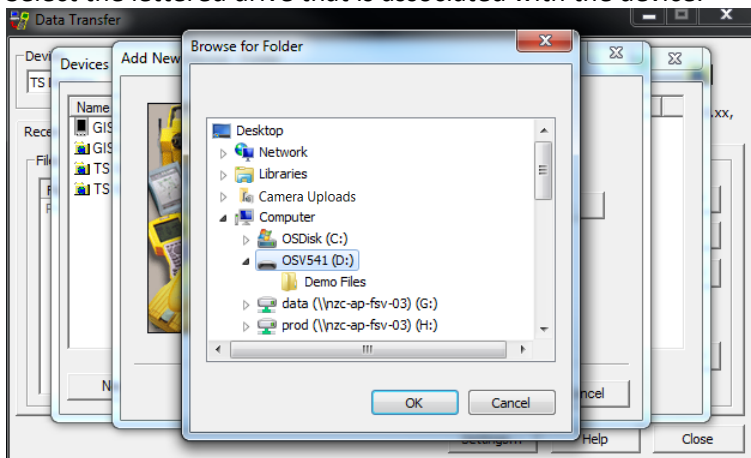
Configuring Data Transfer to transfer files directly to/from SD card

You must change how you use Data Transfer to get data to and from the device. As the SD card is now visible as a lettered drive on the Windows PC, set up a GIS Folder device in Data Transfer and point that to the lettered drive:

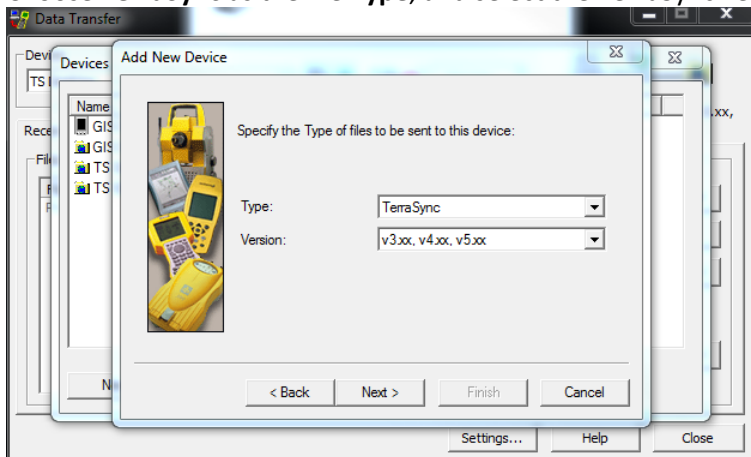
1. In Data Transfer, select **Add a new device**, and select **GIS Folder**:



2. Select the lettered drive that is associated with the device:



3. Choose **TerraSync** as the file **Type**, and select the TerraSync version:

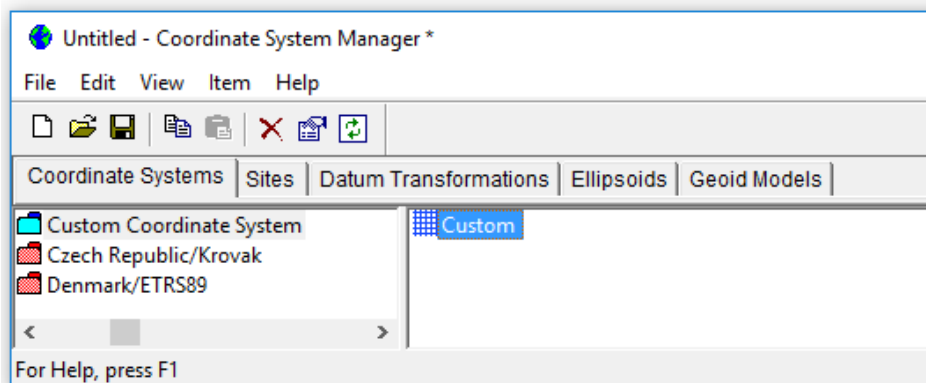


With these settings applied, you can use Data Transfer to send files directly to and from the SD card.

Transferring Coordinate System files

You cannot transfer single coordinate system files or Coordinate System export files using the GIS folder option. If you want to add custom coordinate systems that are not available in the version of TerraSync you have installed, follow these instructions:

1. In GPS Pathfinder Office, open **Utilities / Other / Coordinate System Manager**.
2. Select the Coordinate System you want to export (if you want to use only the selected coordinate system).



3. Select **File / Export**, and rename the file to **complete.csw**.
4. Choose a folder on your PC and select **Save**.
5. Copy any related required files (e.g. geoids) to the same folder.
6. Copy the file(s) to the Windows Embedded Handheld device (e.g. via the SD Card Mass Storage connection).
7. On the Windows Embedded Handheld device, move the file(s) to the **Program Files / Common Files / Trimble / GeoData** folder.

For more information

For more information, contact your local Trimble Distribution Partner.