

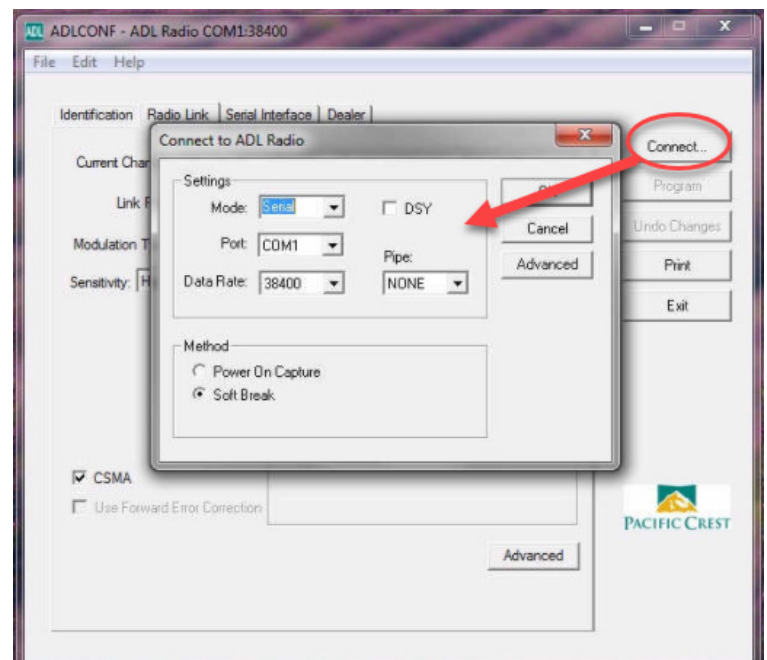
Changing the Frequency on an XDL Rover Radio

There are 2 ways to change the frequency on the XDL rover radio. The Frequency will also need to be changed in the base station

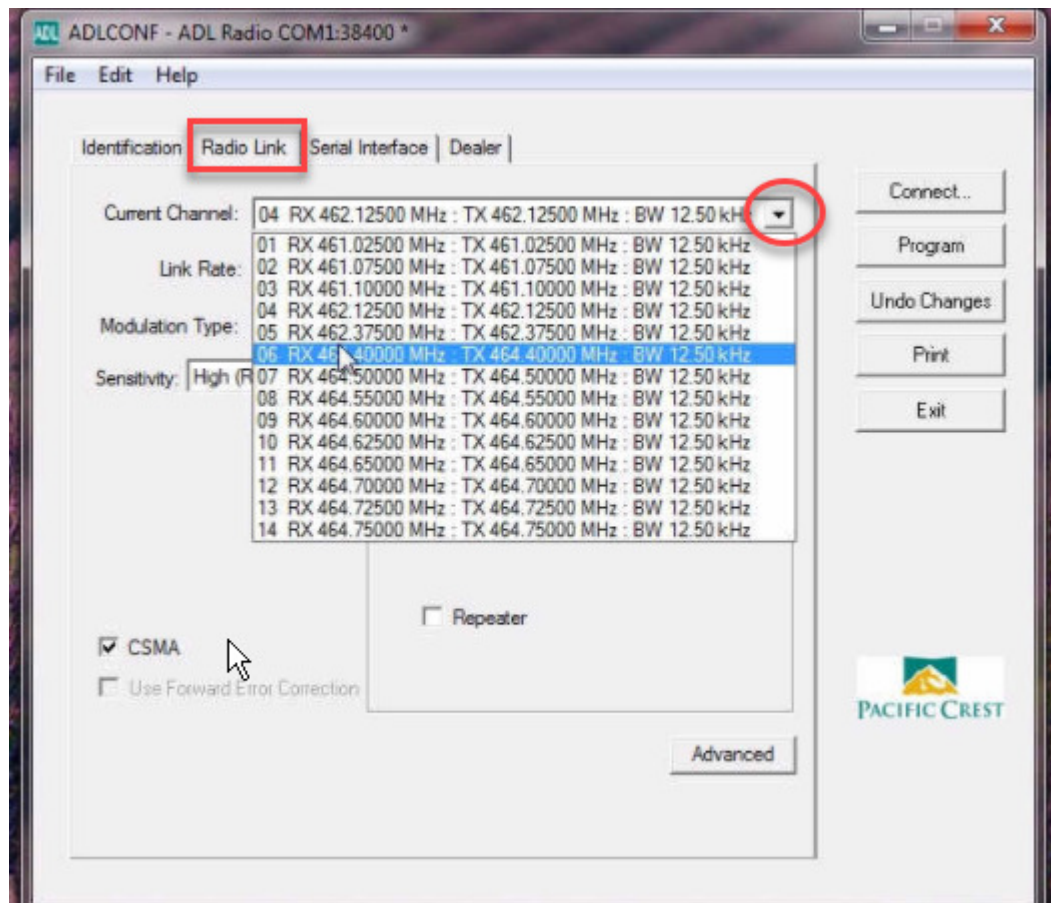
- 1) Use the ADL software to change frequencies.
- 2) Use the Android App to change frequencies in the field. **This is the recommended workflow.**

ADL CONFIG Workflow

1. Download and install the ADL Config software
 - a. http://www.pacificcrest.com/library/ADLCONF_Setup.zip
 - b. After unzipping the file, I had to rename the file extension to exe
 - c. Install software to computer
2. Download the **ADL User Guide** and the **XDL USER GUIDE**
3. Turn XDL Power on
4. Connect the XDL Radio to the computer via serial cable or Bluetooth.
 - a. Please see XDL user guide for Bluetooth connection page 10-15
5. Run the **ADLCONFIG** Software
6. Press the **connect** button.
7. Under settings enter :
 - a. Mode = Serial (depends on your method)
 - b. Port = COM1 (depends on your method)
 - c. Data Rate = 3840
 - d. Method = Soft Break
8. Press **OK** to establish communication between software and XDL radio



9. Click on the **Radio Link** tab
10. Click on the **arrow** next to the **Current Channel** to change



11. Write the frequency down so that you can make the same changes on the Base Radio.
12. Click on Program
13. Exit out of the software and repeat for the next XDL



Android App Workflow

XDLCONF-BT is an application that allows you to quickly configure Bluetooth® enabled Pacific Crest radios using your own Android device. The application connects, communicates and programs basic settings in your radio via Bluetooth wireless communication – in the office or in the field. This removes the need for you to carry a laptop and serial cable to reconfigure radios when overall system requirements change. XDLCONF-BT brings a new era of mobility to the Pacific Crest product portfolio. XDLCONF-BT features:

- Compatible with Android OS 3.0+
- Communicates with Bluetooth equipped Pacific Crest radios wirelessly
- Currently compatible with XDL Rover 2
- Auto connect with a paired radio
- Change ID name, frequency, channel, link rate

1. Download the app here <https://play.google.com/store/apps/details?id=com.trimble.radio>
2. Download the [XDLCONF-BT user guide](#)
3. Pair the XDL with your Android Device
 - a. Settings/Bluetooth/turn on Bluetooth
 - b. Search for devices, looking for XDL Rover 2
 - c. Tap on the XDLROVER – “Serial Number” to pair
4. Run the XDLCONFIG-BT App
5. Tap yes to turn on Bluetooth and scan for devices
6. Select your device and Pair to continue
7. Tabs
 - a. Identification
 - i. Device, serial number, **frequency**, firmware, etc.
 - b. Basic Settings
 - i. Link rate, modulation, protocol, serial rate, channel
 1. Channel is where you would change the channel
 - c. Channel Management
 - i. Add or edit channels
8. Press the Save button to make changes.

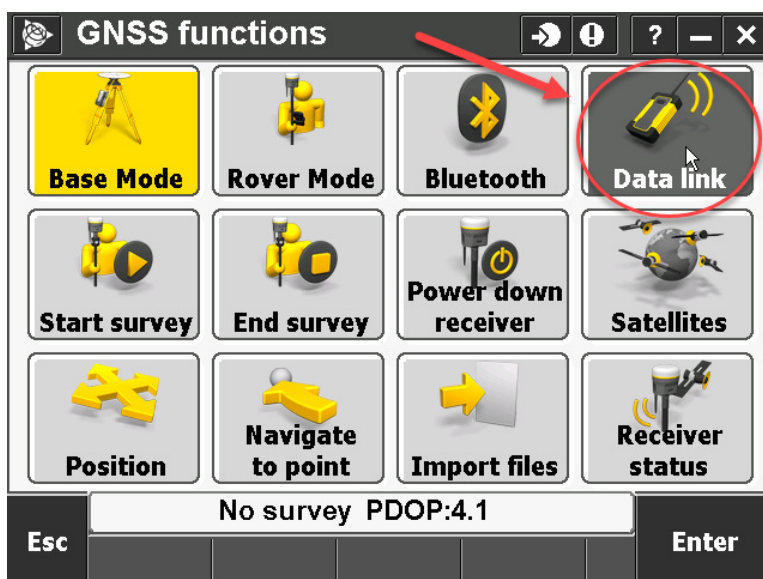


Base Radio Frequency

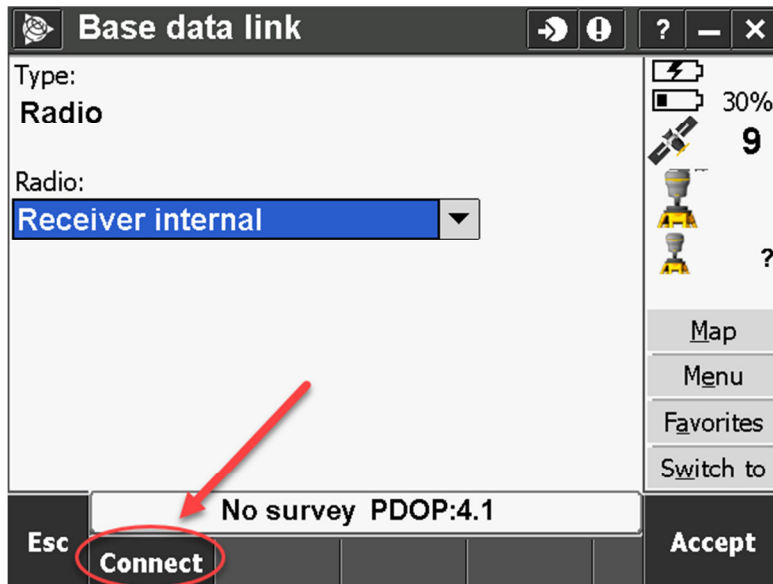
1. Power on the Base Station (R8s)
2. Power on the TSC3
3. Open Trimble Access
4. Go into General Survey
5. An Icon of the base should show up on the left side of the TSC3 screen once it connects



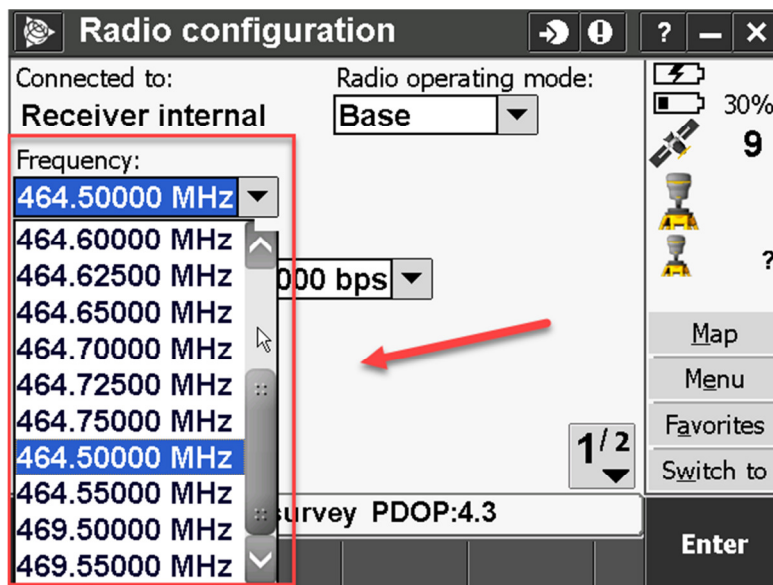
6. Click on the base icon and it will bring up the GNSS Functions. Choose Data Link icon



7. Choose Connect (bottom left screen) to get into the radio and change the settings



8. Click on the dropdown arrow next to frequency to change it.
 - a. Make sure it matches the XDLs



9. Click on Enter to set the radio to the new settings.
10. Click on Accept