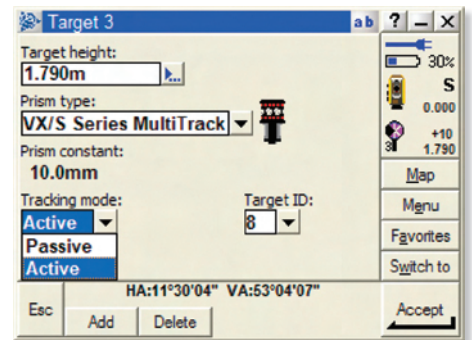


Wait, I've Lost Myself Again!



When performing a robotic survey, losing lock can be just a minor inconvenience. But in some situations, particularly in highly reflective or obstructive environments, those lost seconds can add up to one frustrating afternoon.

When you've lost lock, there are a couple of ways to find yourself again. But the best way to solve this challenge is to stay locked all day long.

Over the years, surveying targets have improved in design and function. Many surveyors find that with a good total station and passive target, robotic surveying is effortless. With active tracking solutions you can save time by ensuring that the target you are shooting is indeed your prism. An even better solution is the Trimble® MultiTrack™ Target. With both passive and active options available, you will maintain lock in some of the most challenging situations.

The Challenge

Shooting across moving traffic should be avoided when possible. But there are times when the alternative is more trouble than it is worth. Such a situation arose recently during a topo job near a busy street. Luckily a control point was readily available. Unfortunately, it was on the wrong side of the road. We managed to get the shot using the latest in target-tracking technology.

Staying on Track

Trimble Survey Controller™ provides three options for target tracking, depending on the type of target you have available: Passive, Target ID and Active. Using Trimble MultiTrack Target you have the option of choosing active or passive tracking to help you stay locked, despite the many reflections and obstructions typical when shooting across a busy roadway. Trimble Survey Controller gives you the flexibility to track

up to 8 targets on a site, so you can move fast when necessary.

If you have a Trimble MultiTrack Target available, the set up is easy:

- 1) From Trimble Survey Controller main menu, you can view the current targets, their type and height.
- 2) Go to Target Details page to add a new target > Enter target height and select the prism type.
- 3) Choose VX/S Series MultiTrack Target > Set to Active Tracking Mode > Set the Target ID > Accept.
- 4) Select same Target ID on the Trimble MultiTrack Target

EFFICIENCY AT WORK

In highly reflective areas and across traffic, the potential for losing your target rises exponentially:

Old Way: Set-up Total Station >
Lock on to target >
Hope you stay locked

In such a setting, a more efficient way is to ensure you are locked and stay that way:

New Way: Set-up Total Station >
Lock on to target >
Stay locked

Resources

The Trimble website contains an overview of working with these three styles of targets: www.trimble.com/surveytargets.shtml