

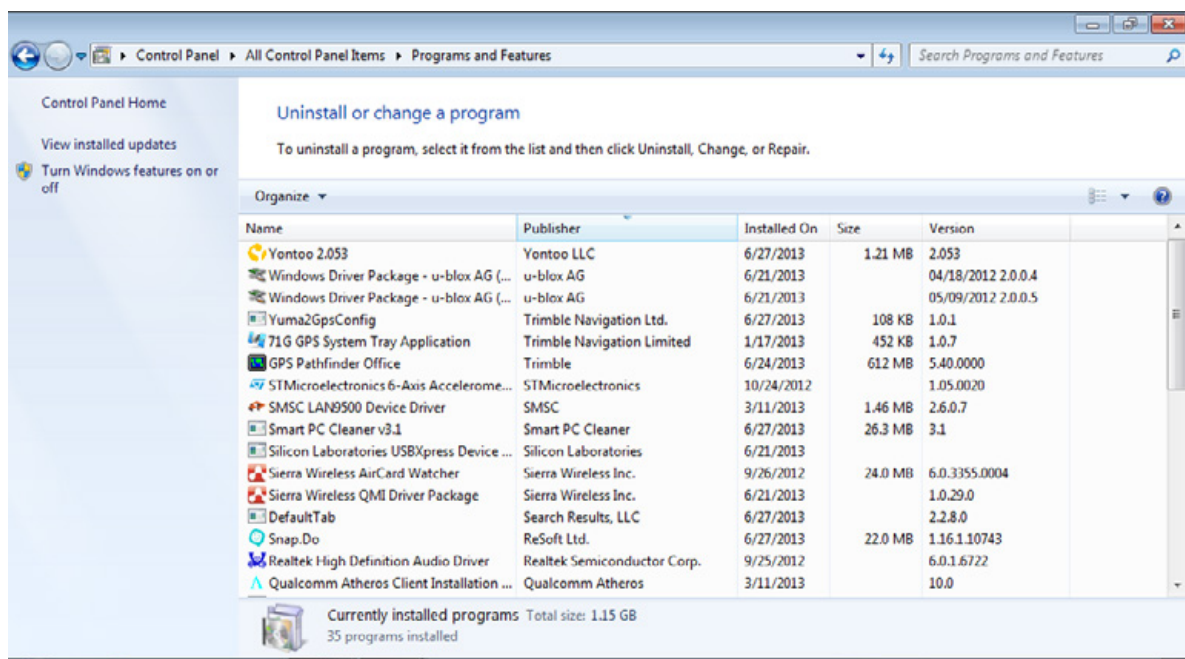
28 June 2013

Trimble Yuma 2 Tablet Computer: Installing the GPS patch update Yuma2GpsConfig V1.0.1

This support note describes a known issue of logging data with the Trimble® TerraSync™ software version 5.42 or later using the integrated GPS receiver on the Trimble Yuma® 2 tablet computer, and provides details of a patch to update the GPSCfg.exe program on the Yuma 2 tablet computer.

Note: If your Yuma 2 tablet is powered by the Windows® 7 Professional operating system version 1.0.0.7, you must install the Yuma2GpsConfig V1.0.1 update before you can run the TerraSync software version 5.42. Without this update installed, you may not be able to log GPS positions/features reliably in the software under normal conditions.

1. On the Yuma 2 tablet computer, select *Start / Control Panel / Programs and Features*, and check if the program Yuma2GpsConfig V1.01. is already installed.



2. If it is not installed:
 - a. Go to www.trimble.com/mappingGIS/yuma2_rugged_tablet.aspx?dtID=technical_support and download the patch *GPSCfgSetupV2.zip*.
 - b. Unzip the GpsConfigSetupV2.msi file from the GpsConfigSetupV2.zip file.

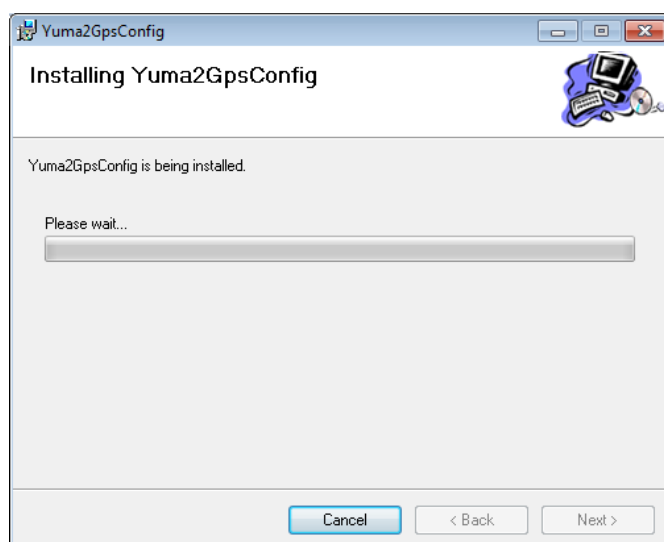
This document is for informational purposes only and is not a legally binding agreement or offer. Trimble makes no warranties and assumes no obligations or liabilities hereunder.

Trimble Navigation Limited, MAPPING & GIS Business Area, 10368 Westmoor Drive, Westminster,
CO 80021, USA

© 2013, Trimble Navigation Limited. All rights reserved. Trimble, the Globe & Triangle logo, and Yuma are trademarks of Trimble Navigation Limited, registered in the United States and in other countries. TerraSync is a trademark of Trimble Navigation Limited. Microsoft and Windows are either registered trademarks or trademarks of Microsoft Corporation in the United States and/or other countries. All other trademarks are the property of their respective owners.



- c. Run the GpsConfigSetupV2.msi file and follow the prompts.



3. When the installation is complete, press the green power button on the Yuma 2 tablet to put it into Sleep mode.
4. When the top LED starts flashing, press the green power button again to wake up the Yuma 2 tablet.
5. If you still cannot log data in the TerraSync software, contact your [local Trimble GIS dealer](#).