

SUPPORT NOTE

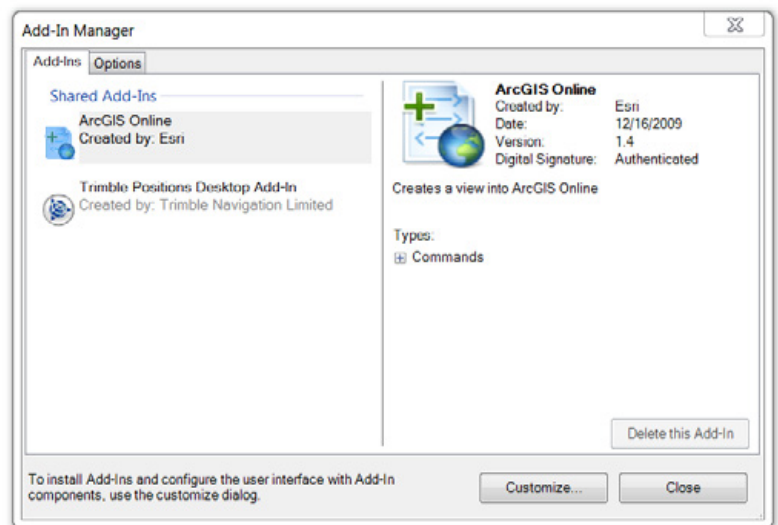
22 OCTOBER 2013

TRIMBLE GPS PATHFINDER OFFICE SOFTWARE: PRJ FILE ACQUISITION WITH ESRI ARCGIS 10.1 OR LATER

The Trimble® GPS Pathfinder Office® software can export Shapefiles with .prj files when using the Export utility. An ArcMap Add-In is available to extract the .prj file from an open ArcMap map document (.mxd) to allow GPS Pathfinder Office software users to browse to the required .prj file for use in their Export workflow.

INSTALLING AND USING THE ADD-IN

1. Download the SaveCoordinateSystemFileAddIn.zip file from: <http://trl.trimble.com/dscgi/ds.py/Get/File-689261/SaveCoordinateSystemFileAddIn.zip> .
2. Extract the zip SaveCoordinateSystemFileAddIn.zip archive .
3. Open ArcMap.
4. From the *Customize* menu, select *Add-In Manager*.
5. Click **Customize**.
6. Click **Add From File...**
7. Browse to the SaveCoordinateSystemFileAddIn.zip.



This document is for informational purposes only and is not a legally binding agreement or offer. Trimble makes no warranties and assumes no obligations or liabilities hereunder.

Geospatial Division, 10368 Westmoor Drive, Westminster, CO 80021, USA

© 2013, Trimble Navigation Limited. All rights reserved. Trimble, the Globe & Triangle logo, and GPS Pathfinder are Trademarks of Trimble Navigation Limited registered in the United States and in other countries. All other trademarks are the property of their respective owners. SUP29166 (10/13)



8. Select the Add-In file extracted from the zip archive.
9. Click **Install Add-In**.
10. In the *Added Objects...* dialog, click **Ok**.



11. From the *Customize/Commands* list Select *Trimble Controls*.
12. Drag and drop the *Save Coordinate System* command onto an ArcMap toolbar.
13. Open the ArcMap map document file (.mxd), or add the data required from a Geodatabase and click the *Save Coordinate System to a PRJ file* tool.
14. Give the file an appropriate name representing the Coordinate System it is for, and click **Save**.
15. You can now select the .prj file within the GPS Pathfinder Office Export utility when exporting Shapefiles.

