

10 April 2011

GPS Pathfinder ProXH and ProXT Receivers: Setting up a Bluetooth Connection through a Yuma Rugged Tablet Computer

This document describes how to use the Bluetooth Manager software on a Trimble® Yuma® rugged tablet computer to set up a Bluetooth® connection to a GPS Pathfinder® ProXH™ or ProXT™ receiver.

Summary

The Bluetooth Manager software, provided on the Yuma Tablet, enables you to create a Bluetooth profile in either Express or Custom mode.

- In **Express** mode, the default COM port that is assigned to the connection is COM40. This port is not available in all GPS field software.
- In **Custom** mode, you can choose the COM port to use for the connection. You can also choose which Bluetooth service of the ProXH or ProXT receiver you want to connect to.

Note: Some Mapping and GIS software will not accept COM port 40: Trimble recommends that you use Custom mode.

Setting up

On the receiver:

1. Make sure that Bluetooth is enabled on the receiver and the Yuma tablet computer.
2. If the Bluetooth LED is not flashing when the receiver is on, press and hold down the receiver power button for five seconds to toggle Bluetooth on.

Note: If required, use the Radio Activation Manager, from the ProXH or ProXT Downloads area of the [Trimble Technical Support website](#) to re-activate Bluetooth.

On the tablet computer:

The Bluetooth icon should appear in the menu status bar . If Bluetooth is disabled, the icon is red .

- To enable Bluetooth communications, use the stylus to tap and hold the Bluetooth icon and then select *Enable Bluetooth Function*.
- If the Bluetooth icon does not appear in the menu status bar, select *Start/All Programs/Bluetooth/Bluetooth Settings*.

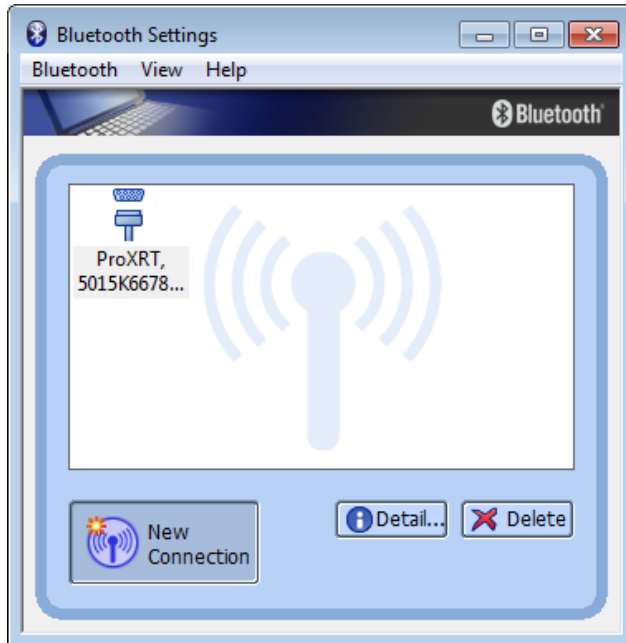
This document is for informational purposes only and is not a legally binding agreement or offer. Trimble makes no warranties and assumes no obligations or liabilities hereunder.

© 2011, Trimble Navigation Limited. All rights reserved. Trimble, the Globe & Triangle logo, GPS Pathfinder, and Yuma are trademarks of Trimble Navigation Limited, registered in the United States and in other countries. ProXH and ProXT are trademarks of Trimble Navigation Limited. The Bluetooth word mark and logos are owned by the Bluetooth SIG, Inc. and any use of such marks by Trimble Navigation Limited is under license. All other trademarks are the property of their respective owners.

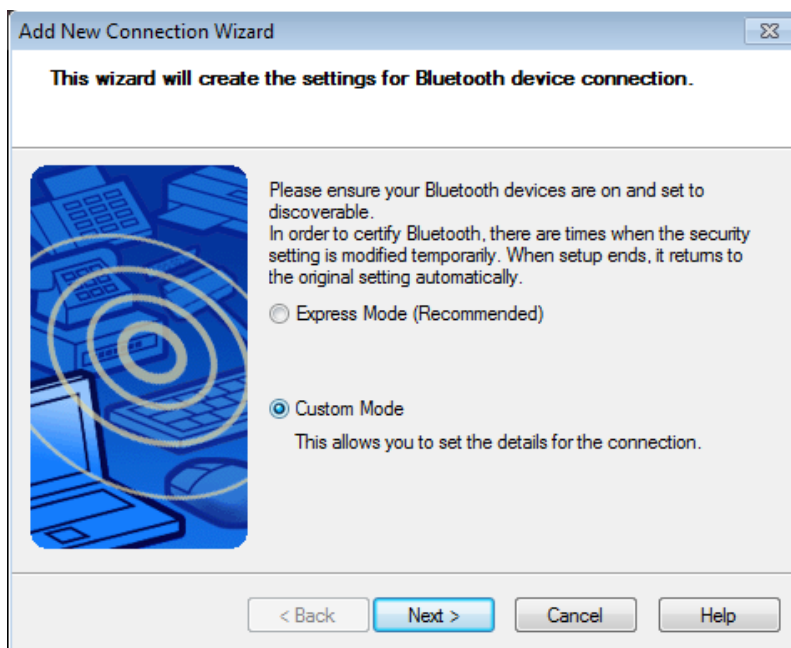


Forming a Bluetooth connection

1. Select *Start / All Programs / Bluetooth / Bluetooth Settings*:

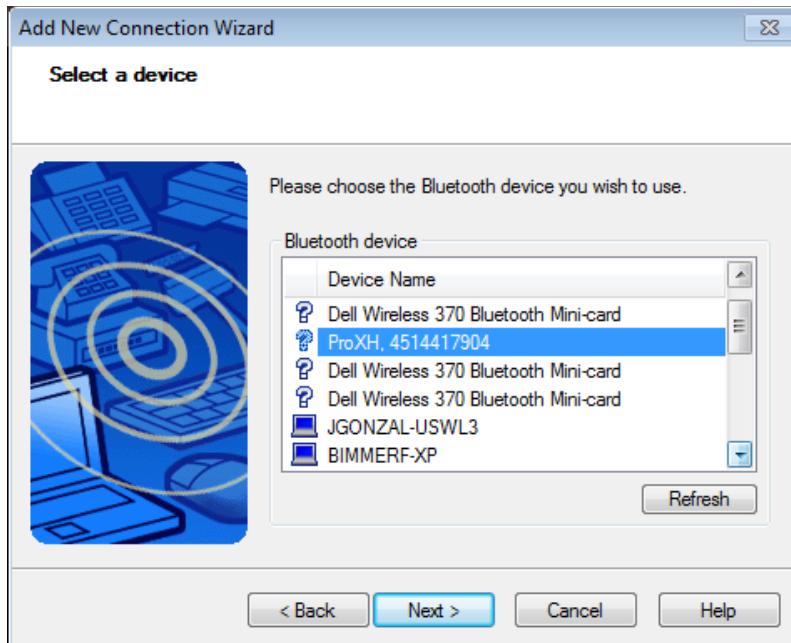


2. Select *New Connection*.
3. Select *Custom Mode*:

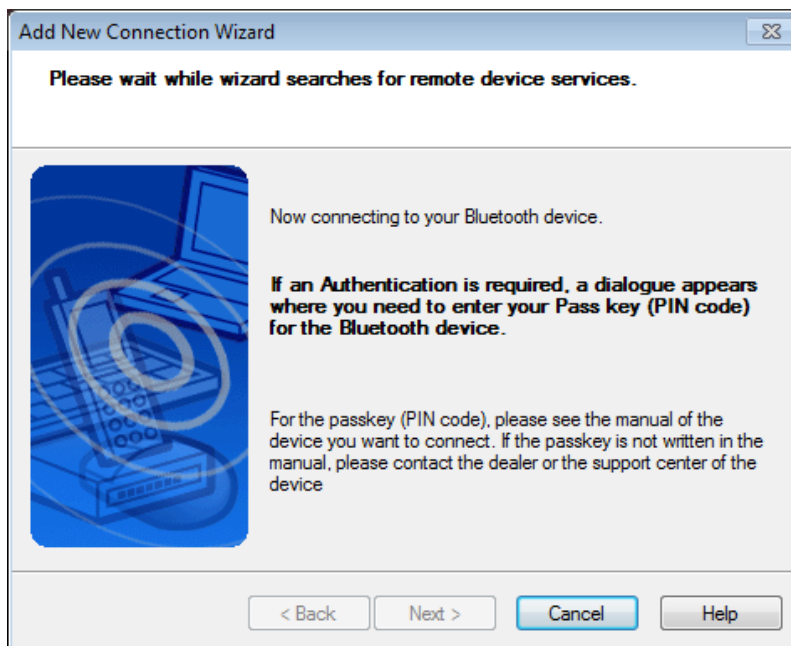


4. Select **Next** to begin the search for new Bluetooth devices.

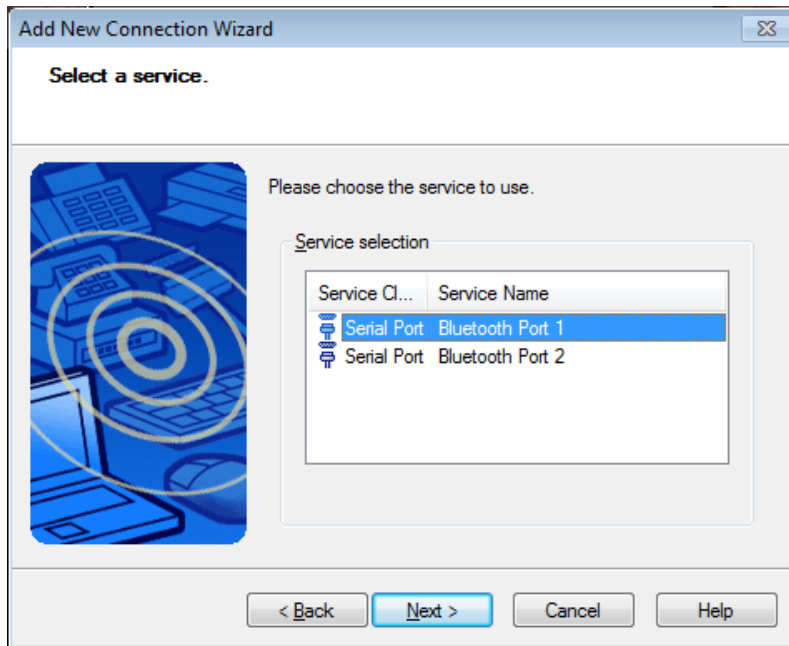
- From the list that appears, select your device. (The name and serial number of the device appears in the list.) Select **Next**:



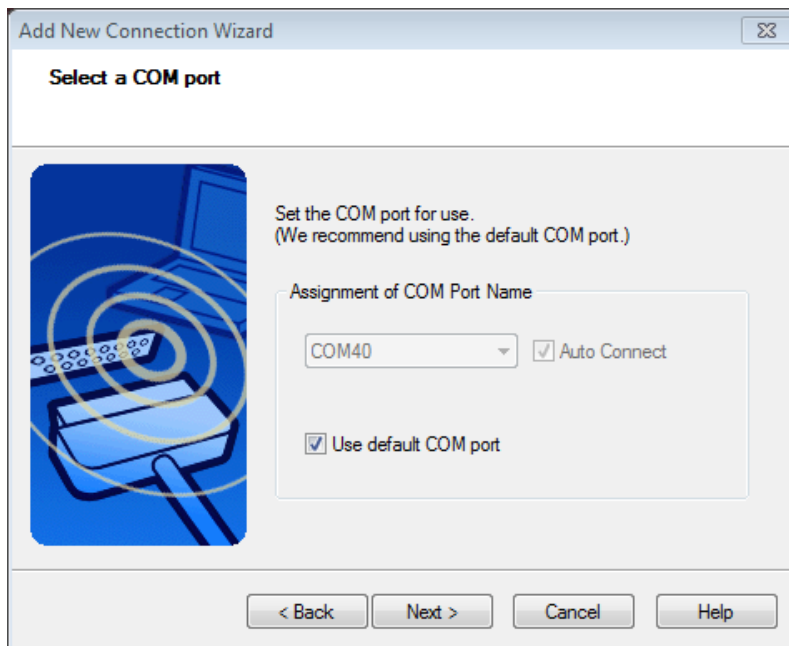
The following screen appears while the wizard connects the device. The next screen appears automatically after a short while:



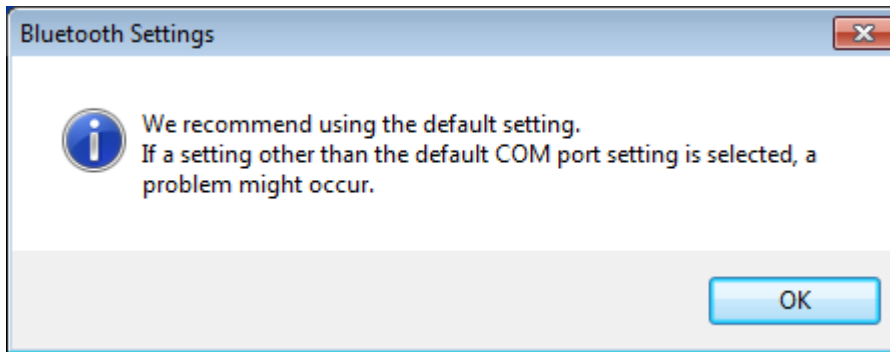
6. Select the required port (usually Bluetooth Port 1) and then select **Next**:



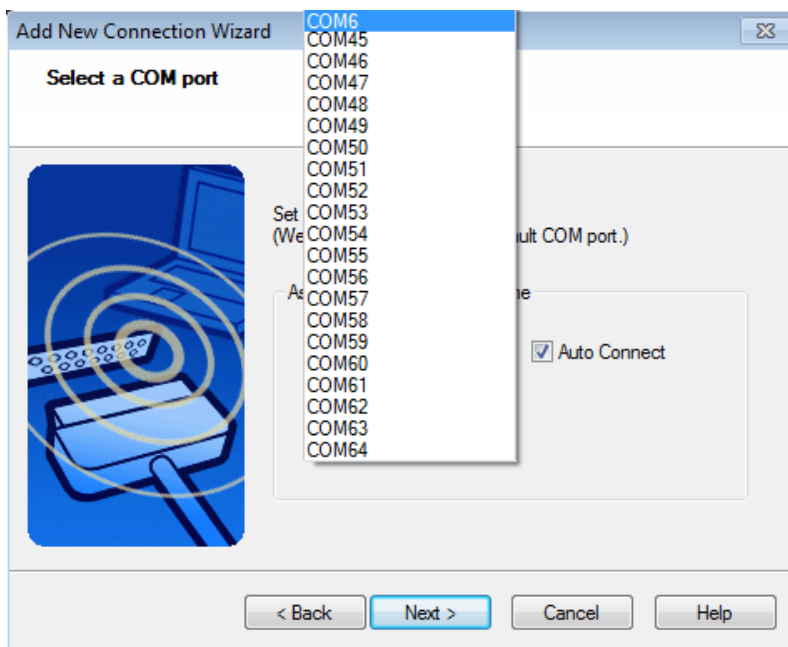
7. In the *Select a COM port* screen, clear the *Use default COM port* check box.



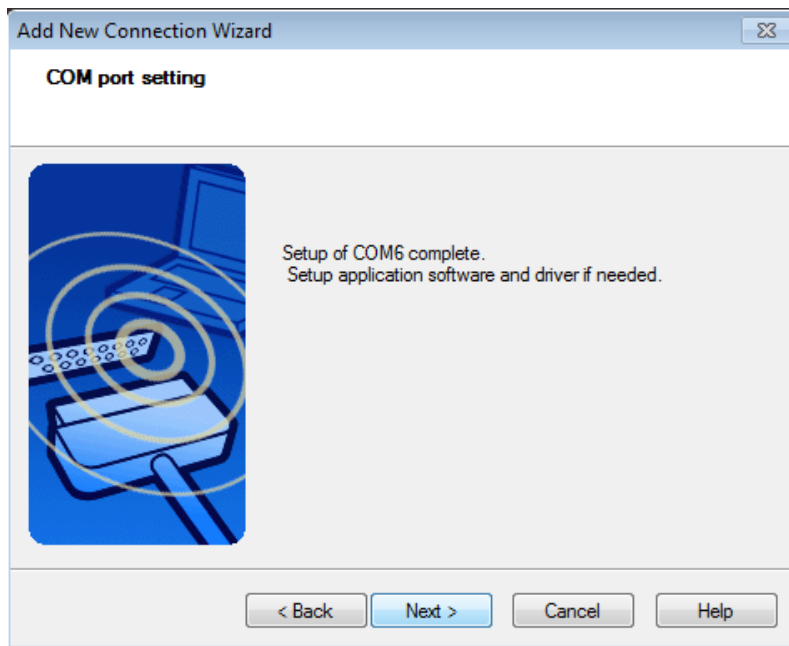
8. When prompted to use the default COM port setting, click **OK**:



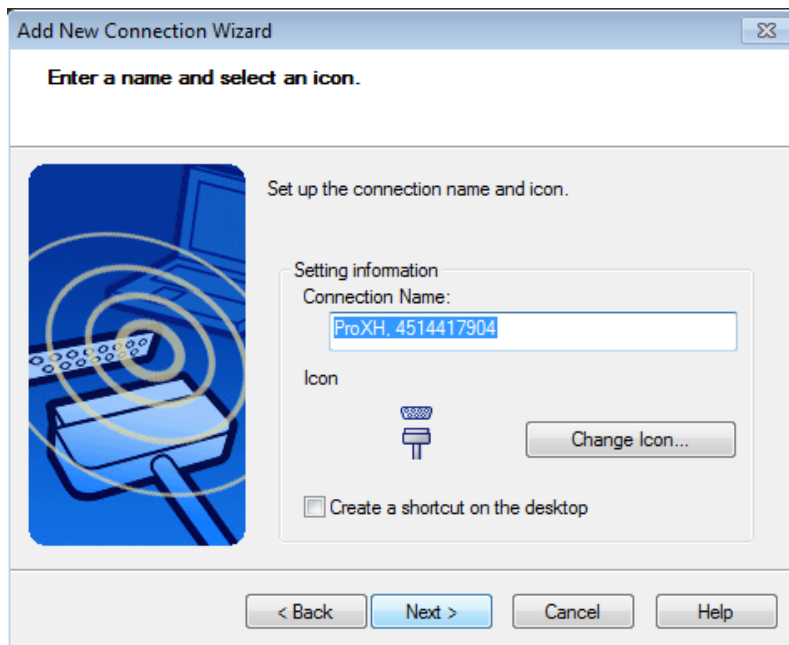
9. To view a list of available COM ports, expand the drop down menu under *Assignment of COM port name*. Select the COM port that you want to assign to the connection and then click **Next**:



10. Click **Next** to accept this COM port:



11. The name and serial number of your receiver appears automatically in the *Connection Name* field. Select **Next**:



12. Select **Finish** to close the New Connection wizard.

The main *Bluetooth Settings* window appears, showing the device that you just set up.

13. Select the device and then select *Bluetooth / Connect*.

