

4 April 2011

GeoExplorer 6000 Series: Option Activation Wizard

Before Trimble® GeoExplorer® 6000 series upgrade options can be used, they must be associated to a unique handheld, and then activated on that handheld. This Support Note describes how you can activate device options for the GeoExplorer 6000 series handheld using the Option Activation wizard, once they have been associated with your handheld by a Trimble representative.

Upgrade Options

The following upgrade options are available for the GeoExplorer 6000 series:

- Floodlight™ Technology option
- NMEA Output option

Option Activation wizard

Use the Option Activation wizard to activate upgrade options on the handheld. The wizard can work in two modes: Automatic mode or Manual mode. If you are able to connect your handheld to the Internet, you can use the Option Activation wizard in Automatic mode to activate upgrade options. As an alternative, or if you are not able to connect your handheld to the Internet, use the Option Activation wizard in Manual mode to manually activate upgrade options.

Automatic Update (requires an Internet connection)

The Automatic mode of the Option Activation wizard uses an Internet connection to download the Option Activation file for your handheld. The following Internet connection methods are supported:

- A pass-through connection to a desktop PC connected to the Internet using Microsoft® ActiveSync® technology or the Windows Mobile Device Center software.
- A Wi-Fi connection to a wireless hotspot or corporate LAN.
- A cellular connection using the 3.5G modem.

This document is for informational purposes only and is not a legally binding agreement or offer. Trimble makes no warranties and assumes no obligations or liabilities hereunder.

© 2011, Trimble Navigation Limited. All rights reserved. Trimble, the Globe & Triangle logo, and GeoExplorer are trademarks of Trimble Navigation Limited, registered in the United States and in other countries. Floodlight is a trademark of Trimble Navigation Limited. Microsoft and ActiveSync are either registered trademarks or trademarks of Microsoft Corporation in the United States and/or other countries. All other trademarks are the property of their respective owners.



To use the Option Activation wizard in Automatic mode:

1. On the *Home* screen, tap the device name (for example, “GeoXH”) and then flick your finger or stylus to the left:



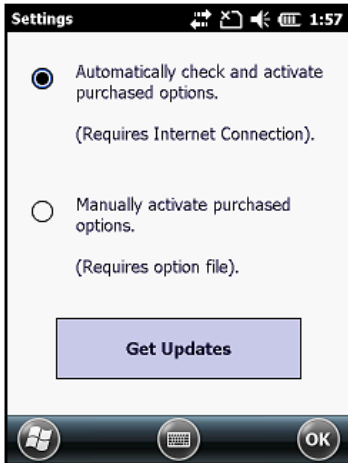
2. Tap *System Information*:



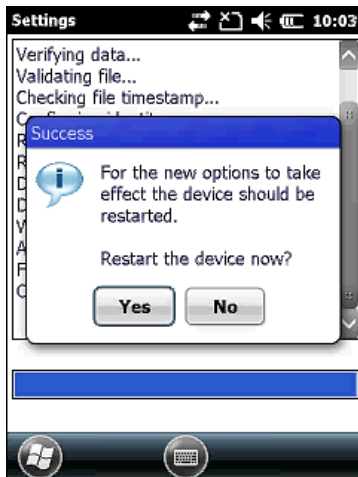
3. Flick the stylus left or right to view the *Options* screen:



4. Tap **Activate Options**.
5. Select the *Automatically check and activate purchased options* option:



6. Tap **Get Updates**. The Option Activation Wizard downloads the Option Activation file to the handheld, and activates all available upgrade options for the handheld.
7. When the Option Activation procedure is complete, restart the handheld. To do this, tap **Yes**:



Manual Update (no Internet connection required)

Use the Manual Update option when the handheld is unable to access the Internet.

Note: To use this option, you must have received an Option Activation file from your Trimble reseller.

To set up manual updates:

1. Retrieve the Option Activation file (.xml) for the handheld from your Trimble reseller.
Note: This file is provided by electronic media (diskette, CD, SD, or USB memory stick).
2. Transfer the Option file to one of the following:
 - the GeoExplorer 6000 series handheld

- the PC that is connected to the Trimble GeoExplorer 6000 series handheld and then transfer it to the handheld using Microsoft ActiveSync technology or the Windows Mobile Device Center software.
3. On the *Home* screen, select the device name (for example, “GeoXH”) and then flick the stylus to the left.



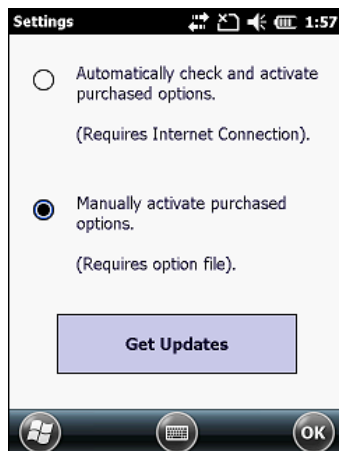
4. Select *System Information*.



5. Flick the stylus left or right to view the *Options* screen:

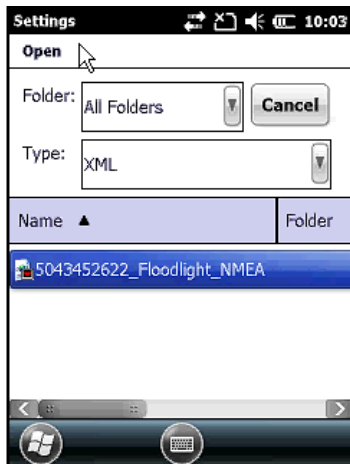


6. Tap **Activate Options**.
7. Select the *Manually activate purchased options* option.

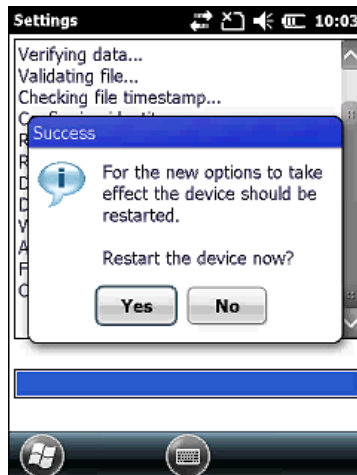


8. Select **Get Updates**.

9. Select the option file (.xml) from the list. The Option Activation wizard loads the file and activates all available upgrade options for the handheld.



10. When the Option Activation procedure is complete, restart the handheld. To do this, tap **Yes**:



For more information

For more information, or to purchase upgrade options for your GeoExplorer 6000 series handheld, contact your Trimble reseller.